

# Improve

## NICU OUTCOMES

By encouraging and supporting parent and family bonding with their infant.

As we continue to innovate and add new capabilities, the bedside camera can be automatically updated with additional functionality without having to replace the camera.

That means you benefit from our commitment to listening and continually improving our technology without the hassle and expense of downtime associated with swapping hardware.



**5-inch LED Touch Screen** to assist with camera positioning and on/off capability



**Upgrade-ready** for remote software updates



**Infrared Capabilities** for a clear visual of baby, even in the darkest environments



**Wired or WIFI Networking Capability** to meet your facility preferences



**Flexible mounting** options for any unit configuration



**USB Ports** for future functionality, such as one-way audio and extension cameras



**SCAN TO  
SCHEDULE A  
DEMONSTRATION  
OF OUR  
CAMERASYSTEM**



AngelEye's HIPAA-compliant platform includes four independent solutions.



## CameraSystem

Live-streaming access anytime, anywhere encourages family bonding and decreases anxiety.

- 24/7, live-streaming video
- In-app translator
- Real-time family chat



## OnlineEducation

On-demand resources empower families with information to ensure a successful transition home.

- Customizable
- Use the free app or access online
- Accessible post discharge



## PatientConnect

Integrate parents as integral members of the care team with real-time and recorded updates.

- Share vital information and memorable moments
- One-way video, picture/text



## MilkTracker

Comprehensive feeding management solution that encourages parents' participation in their infant's feeding plan.

- Leading barcoding technology
- Clinician-supported best practice
- Seamlessly EHR integration



100+ Hospitals



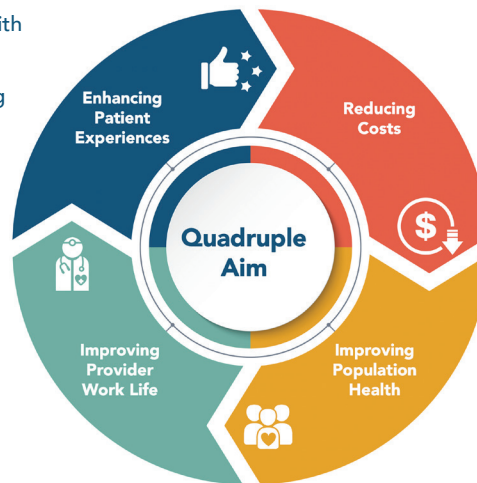
Average parent logs in 5+ times per day



Parents average 3.5 minutes per visit

## The AngelEye Value Proposition

- **Supports family-integrated care** by empowering, educating, and engaging families in the care of their child
- **Builds trust between clinician and family** with personalized communication
- **Improves family satisfaction** by recognizing parents as integral members of the care team
- **Encourages family participation** in infant/baby's feeding plan
- **Saves time** by reducing time spent educating families at the bedside
- **Improves provider efficiency** by enabling quick, individualized updates from any mobile device, tablet, or computer
- **Improves clinician efficiency** minimizing disruptions in workflow by decreasing calls from families
- **Aims to eliminate risk** of feeding and preparation errors



- **Decreases length of stay** by supporting discharge readiness
- **Reduces donor milk cost** by supporting Moms Own Milk (MOM) production
- **Decreases readmissions** by increasing family engagement and discharge education access
- **Reduces expense** related to staff time, quality oversight, & error/risk litigation
- **Encourages bonding and decreases anxiety** with live-streaming video of baby and frequent updates
- **Supports breast milk establishment and production** with easy access to view baby
- **Supports ongoing family educational needs** by providing resources post-discharge

## Superior Security

Cloud-Based



HIPAA-Compliant



EHR Integration



End-to-End Encryption



Identity Management



3rd-Party Penetration Testing

